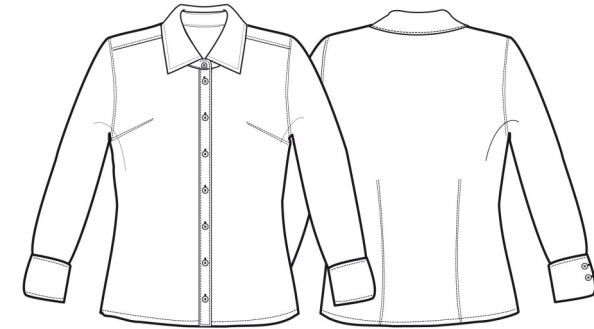


PR300 LADIES POPLIN LONG SLEEVE SHIRT



	CARTON	PACK	TOTAL SKUS
SIZES 6 - 20	36	6	272
SIZES 22 - 26	12	3	102



Fabric

Colours 105gsm, (White 115gsm) 65%/35% Polyester/Cotton, Plain Poplin weave

Colours

Aubergine, Aqua, Black, Brown, Burgundy, Bottle, Dark Grey, Emerald, Hot Pink, Khaki, Light Blue, Lilac, Lime, Mocha, Mid Blue, Natural, Navy, Pink, Purple, Orange, Red, Rich Violet, Royal, Sapphire, Strawberry Red, Silver, Steel, Sunflower, Turquoise, White

Sizes

6, 8, 10, 12, 14, 16, 18, 20, 22, 24, 26

Features

- Ladies' easy care long sleeve blouse
- Soft collar styling
- Rounded bottom hem
- Complements men's style PR200
- Fitted styling with bust and back darts
- Pearlised buttons on light blue and white shirt, self colour buttons on remaining
- Double buttons on cuff
- Made from OEKO-TEX® Standard 100 Fabric

Country of Origin

Bangladesh

Carton Dimensions

40 cm x 17 cm 58 cm

Carton Weight

8.35 kg approx.

VAT Code

6206 40 0000

Colour	Pantone	C	M	Y	K	Colour	Pantone	C	M	Y	K
Aqua	344	32	0	31	0	Natural	1205	0	5	31	0
Aubergine	5115	53	91	21	72	Navy	2766	100	87	0	34
Black	0	0	0	0	100	Orange	1655	0	65	87	0
Bottle	560	69	0	60	76	Pink	1895	0	30	6	0
Brown	476	30	72	74	84	Purple	269	82	98	5	26
Burgundy	216c	0	83	34	47	Red	200	0	100	65	15
Dark Grey	424	30	20	19	60	Rich Violet	2587	60	71	0	0
Emerald	341	100	0	69	30	Royal	286	100	60	0	6
Khaki	7503	0	12	35	25	Sapphire	300	99	51	0	0
Hot Pink	214c	0	100	24	4	Silver	428c	0	0	0	23
Light Blue	2708	3	4	9	0	Strawberry Red	186	2	100	82	6
Lilac	264	27	30	0	0	Steel	7545	56	30	17	52
Mocha	7505	17	44	59	51	Sunflower	136c	0	27	79	0
Lime	382	29	0	96	0	Turquoise	312	89	0	11	0
Mid Blue	2718	72	43	0	0	White	White	0	0	0	0

Size	6	8	10	12	14	16	18	20	22	24	26
Collar cm	39	40	41	42 1/2	44	45 1/2	47	48 1/2	50	51 1/2	53
EU Size	34	36	38	40	42	44	46	48	50	52	54
Call size	2XS	XS	S	M	L	XL	2XL	3XL	4XL	5XL	6XL
Bust actual "	35 1/2	37 1/2	39 1/2	41 1/2	43 1/2	45 1/2	47 1/2	49 1/2	51 1/2	53 1/2	55 1/2
Bust actual cm	90	96	101	106	111	116	121	126	131	136	141



WASH DARK COLOURS SEPARATELY, WASH INSIDE OUT, DO NOT SOAK, DO NOT DRY CLEAN **NB. The colour previously known as 'Postman Grey' is now referred to as 'Steel.'**