

PR302 Women's Short Sleeve Poplin Blouse

Description

A ladies short sleeve blouse with semi-fitted styling, available in 28 colours. The blouse features soft collar styling with bust and back darts and a rounded bottom hem for a really attractive piece of workwear.

Product Features:

- Soft collar styling
- Rounded bottom hem
- Feminine fit style with bust and back darts.

Available In:

6, 8, 10, 12, 14, 16, 18, 20, 22, 24, 26, 28*, 30*

Certifications:

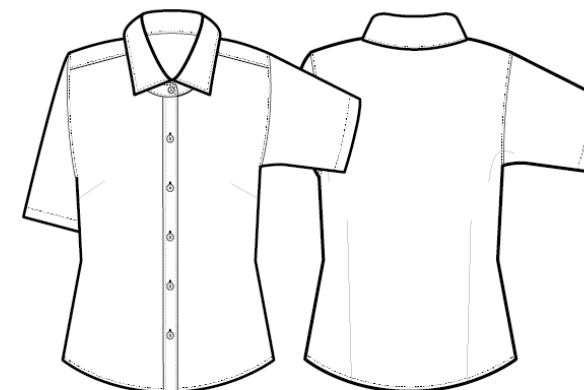


Colours:

Colour	Pantone	C	M	Y	K	Colour	Pantone	C	M	Y	K
Aqua	344c	32	0	30	0	Navy *	533c	95	72	15	67
Aubergine	7449c	65	98	21	83	Orange	172c	0	73	87	0
Black *	Black c	0	0	0	100	Pink	670c	1	17	0	0
Bottle	7736c	56	0	58	78	Purple *	7447c	77	85	6	18
Brown	4975c	36	84	59	85	Red *	201c	7	100	68	32
Burgundy *	209c	20	97	40	58	Rich Violet	7677c	68	78	0	0
Dark Grey *	425c	52	29	30	78	Royal *	7686c	100	73	0	0
Emerald	7728c	93	0	75	55	Sapphire	2144c	95	53	0	0
Hot Pink	215c	66	100	26	24	Silver *	429c	21	11	9	23
Khaki	7536c	11	13	30	32	Steel *	Cool grey 11c	44	34	22	77
Light Blue *	2707c	20	6	0	0	Sunflower	7411c	0	42	75	2
Lilac	2085c	9	16	0	0	Turquoise *	7703c	79	2	10	11
Lime *	2302c	33	7	74	5	White *	White	0	0	0	0
Mid Blue *	2135c	62	39	0	0						
Natural	4755c	3	16	20	9						

Fabric:

65% Polyester, 35% Cotton Poplin, 105gsm.
White: 115gsm.



Suggested Decoration:

Screen Print, Transfer Print, Embroidery

Country of Origin:

Bangladesh

Commodity Code:

6206 40 0000

Features:



Wash Care:



Carton Information:

Sizes	Carton	Pack	SKU's	Carton Weight	Carton Dimensions
6-20	36	6	224	7.2kg	58cm x 38cm x 16cm
22-26	12	3	84	3.4kg	58cm x 38cm x 14cm
28-30	6	2	28	3.4kg	58cm x 38cm x 14cm

Garment Sizes:

Size	6	8	10	12	14	16	18	20	22	24	26	28	30
Bust to fit"	31	33	35	37	39	41	43	45	47	49	51	53	55
Bust to fit cm	79	84	89	94	99	104	109	114	119	124	129	134	139
Bust actual cm	89	94	99	104	109	115	119	124	129	134	139	144	149
Call size	2XS	XS	S	M	L	XL	2XL	3XL	4XL	5XL	6XL	7XL	8XL
Back length cm	62	63	64	65	66	67	68	69	71	73	75	75	75